

Carroll SWCD  
613 High St. NW Suite 2  
Carrollton, Ohio 44615  
Phone 330-627-9852  
Fax 330-627-5066

Return Service Requested

US Postage Paid  
Permit #19  
Non-profit

## CARROLL SOIL AND WATER CONSERVATION DISTRICT

Carroll SWCD

January 2011

Issue 1

### District Supervisors

Bryan Burgett-- Chairperson  
William Newell-- Vice Chair  
Tyler Teeter-- Secretary  
Clifford Miller-- Fiscal Agent  
Vernon Cummings-- Treasurer

### District Staff

Linda Yeager, District Administrator

### NRCS Staff

Kevin Swope, District Conservationist

### Carroll SWCD held it's 66th Annual Meeting

On October 26, 2010 Carroll SWCD held it's 66th annual meeting at the St. John's Villa's Social Room. Vernon Cummings was re-elected to the Carroll SWCD Board of Supervisors. He will serve another three-year term beginning in January 2011. Vernon has been on the Carroll SWCD board since 1974 when he was appointed to fill the term for Lowell Hein who passed away. Vernon has donated hundreds of hours to help protect the natural resources of Carroll County.

Linda Yeager gave a power point presentation on the SWCD highlights of 2010.

Cliff Miller gave a presentation on the formation of the Eastern Ohio Grazing Council of which Cliff serves as the chairperson. The EOGC will hold monthly meetings at FFA Camp Muskingum the fourth Thursday of Jan., Feb., and March.

Susan Cromwell, editor of the Farm and Dairy was the guest speaker. Susan spoke about her job and some of the difficulties facing farmers today.

### CARROLL COUNTY DAFFODIL DRIVE-IT-YOURSELF TOUR

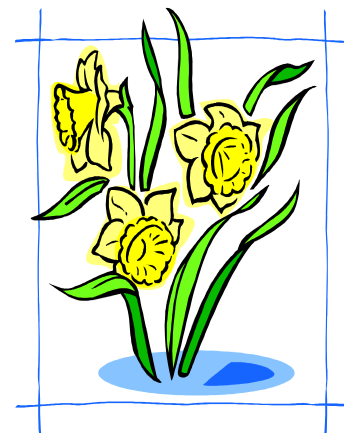
**HOLD THIS DATE: APRIL 10, 2011**

**TOWNSHIPS HIGHLIGHTED: ORANGE & MONROE**

**STARTING POINT: CARROLL COUNTY FAIRGROUNDS**

**TIME: 12:00 P.M. TO 4:00 P.M.**

**SPONSORED BY CARROLL COUNTY AG COMMITTEE WHICH CONSISTS OF  
CARROLL COUNTY CONVENTION & VISITORS  
BUREAU, CHAMBER OF COMMERCE, SOIL AND WATER CONSERVATION  
DISTRICT, FARM BUREAU, FARM SERVICE AGENCY**



### Carroll SWCD reorganizes for 2011

Reorganizational meeting for the Carroll SWCD was held on January 19, 2011 at the SWCD office. The officers for 2011 are Bryan Burgett-- Chairperson; Bill Newell-Vice Chairperson; Tyler Teeter-Secretary; Vernon Cummings-- Treasurer; Clifford Miller-- Fiscal Agent.

Conservation districts are locally organized, self-governing bodies chartered by the state. Through voluntary action and cooperation of landowners and other stakeholders, the district works to conserve land, water, forest, wildlife, and other related resources for the benefit of all. A local board of five elected supervisors governs our District. Supervisors meet with staff members on a monthly basis to conduct the District business.

### OSU Extension will return to Carroll County

**Thanks to a community effort Carroll County will have an OSU Extension educator back in the county. Donations were collected to make this possible. The position is being advertised by OSU and will be filled sometime in March.**

**The office will be co-housed with Carroll SWCD as part of the agreement with OSU. Thanks to everyone that made this possible.**

## **BRISTOL BLACK RASPBERRY**

The Bristol Black Raspberry is the leading cultivar in Ohio. It produces large, firm berries that can be handled without bleeding. The berries are extremely versatile, making them good for canning and freezing as well as fresh eating. The berries will ripen in early July.

## **CONCORD GRAPE**

Concord grapes have large seed and are highly aromatic. They are often used to make grape jelly, grape juice, grape wine and candy. Concord Grape season typically begins in late July and continues through September.

## **RED CANADICE GRAPE**

Canadice is more winter hardy than most seedless grapes. It produces medium clusters with small red berries that are similar to Delaware in flavor and appearance. Canadice clusters may average 0.5 lb., and the vines can be extremely productive.

## **LATHAM RED RASPBERRY**

Latham red raspberries are a reliable favorite! The berries are sweet and juicy and ripen in summer. They are very hardy and grow well in zones 4-8. Raspberries make a great hedge for a part of a sustainable landscape in even a small yard.

## **BLUE CROP BLUEBERRY**

A very dependable producing variety. Fruits ripen in mid season and the harvest goes on for weeks. While the berries are smaller than most, the flavor is outstanding, a hint of tart early while ripening but as berries mature they turn very sweet.

## **ARAPAHO BLACKBERRY**

The Arapaho Blackberry is sweet to

taste, aromatic and large. This thornless blackberry has extremely small seeds and some have called it the “seedless blackberry.” It is a self supporting plant that ripens earlier at the end of May

## **WHITE PINE**

White Pine, an evergreen conifer, is widely distributed throughout eastern North America, including all of Ohio. It is often intolerant of soils that are alkaline in pH and poorly drained.

## **AMERICAN LARCH**

It is the only deciduous conifer that is native to Ohio, and strongly prefers moist to wet sites in acidic soils. Fall color is a beautiful yellow, and after needles drop for the winter yields a strong central leader with strongly horizontal branches, with branchlets that do not droop.

## **ARBORVITAE**

Arborvitae, or white cedar, is primarily found in Ohio in urban landscapes, where it often thrives in dry, alkaline soils. It occurs in greatest abundance in the Wilds of Ohio when found near acidic bogs. It is a good tree to plant to develop a windbreak.

## **FLOWERING DOGWOOD**

The Flowering Dogwood is one of the most popular ornamental trees, with four-season appeal. Showy early spring flowers are the yearly highlight, red fruits and crimson foliage in autumn, and large floral buds and checkered bark in winter make this tree popular.

## **RED BUD**

It heralds the arrival of spring with its showy, lavender-pink flowers that typically open in April, long before the foliage emerges. This ornamental tree is rapidly growing and usually multi trunked in the wild. Redbud prefers deep, moist, organic, well drained soils.

## **NORTHERN PECAN**

The pecan tree is truly the bread and butter in North America. So widely used and distribute by the Native Americans and early settlers, that its natural range is unknown. This plant has a wide range of adaptability.

## **RED OAK**

Red Oak is a major timber tree of the eastern and Midwestern United States. The tough, heavy wood of Red Oak has a reddish-orange coloration, and is an important hardwood for the Ohio timber industry, involved in the production of beams, railroad ties, furniture, flooring and other usages.

## **OHIO BUCKEYE**

The Ohio buckeye is the state tree of Ohio. It is often used as an ornamental tree because of its interesting fruit and bright orange fall foliage. Buckeye is a medium sized tree maturing at 30 to 50 feet in height and it prefers moist, well-drained soils.

## **BLACK WALNUT**

Black Walnut, a rapidly growing tree common in all of Ohio, is most common in moist bottomlands and open fields, but is found everywhere due to squirrels burying its nuts. Black Walnut grows rapidly in youth. It displays an irregular and open growth habit when young.

## **BUR OAK**

Along with White Oak, it is the most picturesque of the Oaks of the Midwest, especially in the winter. Its fiddleshaped leathery leaves, huge fringed acorns, thick and sometimes corky twigs, and deeply ridged bark add to its bold texture.

## **PUSSY WILLOW**

Black willow, or pussy willow, is native to the entire eastern half of North America, and encompasses all of Ohio in its distribution. It is the most common willow in Ohio, abundantly found in wetlands and alongside streams, ponds, and rivers, as well as swampy or marshy areas.

## **BUTTERNUT**

Butternut is found throughout Ohio. It may mature at 60 feet tall by 50 feet wide when it is found in the open. Its elongated nuts, hairy stems, and flattened, shiny ridges on mature trees make it recognizable as a different species than black walnut.



# **Plantskydd®**

**REPELLENT**

**DEER • RABBITS • ELK**

### **Available Now!**

Protect against winter browsing with Plantskydd pre-mixed liquid or soluble powder concentrate. Apply to plants and trees. Protects up to 6 months on dormant plants. 100% organic.

1 qt. pre-mixed spray \$21

1 lb. soluble powder concentrate \$25